

# Committee for Melbourne 2018 Election Priorities

## *'Vote for the future'*

The Committee for Melbourne calls on the next Victorian Government to commit to bold, visionary policies to help sustain Melbourne's liveability and to be a global place of choice for home grown and international talent and capital.

We can be a successful, 21<sup>st</sup> century city, riding the wave of accelerated technological change in a competitive, booming Asia-Pacific region, or be complacent and insular to the detriment of Melbourne and Victoria.

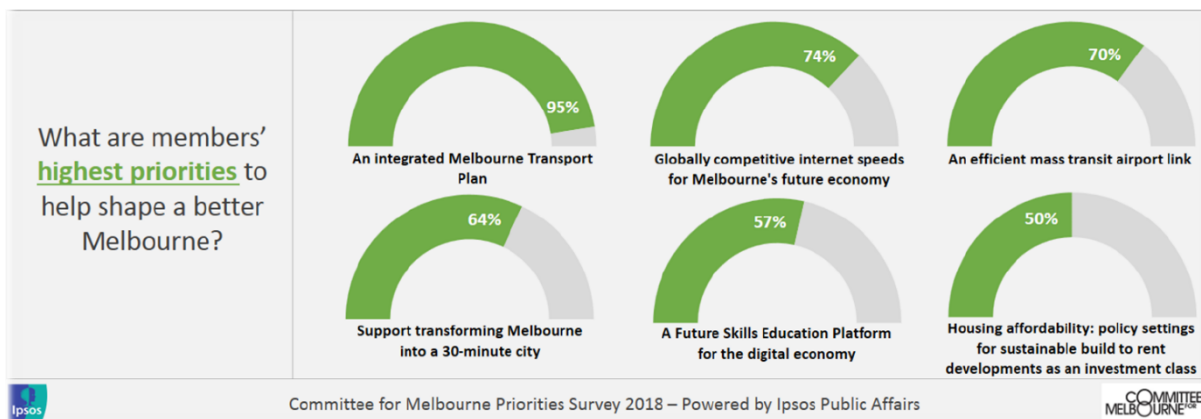
How the next Victorian government approaches these challenges and opportunities over the next ten years will decide Melbourne's, Victoria's, and Australia's future.

Building on Victoria's capabilities is a good place to start. This must be supported by a long-term plan for managing population growth and pressure on our housing and transport infrastructure through an integrated densification, housing and transport strategy and place-making to support Melbourne's prized liveability in a highly competitive world.

A future Victorian Government should:

- Proactively prepare Melbourne and Victoria for success in the era of the Fourth Industrial Revolution.
- Take an integrated, metropolitan-wide approach to tackling the challenges of Australia's fastest growing city to narrow the growing gap between the "haves and the have-nots".

Here is a snapshot of what our members think are priorities for Melbourne:



## Committee for Melbourne 2018 Election Priorities in detail

Committee for Melbourne looks forward to working with the future Victorian Government to shape the city's future by taking a 'One Melbourne' approach to future-proof our city and submits the following ideas for how this can be achieved.



### **Metropolitan collaboration: Melbourne beyond 5 million**

Melbourne is an attractive city where people want to live, visit and do business. With the population reaching five million last month ahead of all predictions, our growth could be threatening our prosperity and liveability. The next government should:

- *Introduce metropolitan-wide management such as a Greater Melbourne Commission, empowered to act in the interests of Greater Melbourne.*
- *Remove road blocks created by political divides and three tiers of government*
- *Develop a 50-year public transport blueprint that integrates transport with land use, economic planning and technology*
- *Have sustained investment in infrastructure so industry can gear up for a major sustained pipeline of projects*
- *Make optimal use of the spare capacity in existing roads, energy and public transport assets through the introduction of time-of-use charging (Infrastructure Victoria 30-year plan priority)*
- *Commit to a 10-year infrastructure program with bipartisan support, based on Infrastructure Victoria recommendations*
- *Ensure an equitable energy future for residents, business and industry, providing affordable, reliable, dispatchable and environmentally responsible power*
- *Deliver affordable living solutions that go beyond affordable housing*
- *Create a dynamic 30-minute polycentric city, with Melbourne as the global centre of excellence in liveable density, with solutions in medium density development that retain the city's soul, while accommodating major growth*



### **Future skills**

Technological advancements are rapidly changing the nature of work. To succeed in this new economy, we need a workforce with new skills and capabilities. The next government should:

- *Advocate for a strategic immigration and population policy in Canberra to attract migrants with skills relevant to the new economy*
- *Develop – and implement – a radical new strategy to equip our current and future workforce with the enterprise skills to succeed in the new economy, starting with the primary and secondary school curriculum.*



### **Housing mix**

Melbourne's key workers – including nurses, police officers and teachers – are particularly challenged in finding a place to live close to their work. Furthermore, expensive cities, particularly housing, make self-employment and entrepreneurship more difficult. The next government must facilitate the Build-to-Rent market and invest in social and affordable housing based on the advice of Infrastructure Victoria and:

- *Work with all stakeholders to make rental accommodation an attractive investment class for institutional investors*
- *Invest in social housing and other forms of affordable housing for vulnerable Victorians to significantly increase supply (Infrastructure Victoria 30-year plan priority)*



### **Airport link**

The world's leading cities have high quality direct (public) transport links to their airports. Melbourne does not (yet). The next government must continue the collaborative work already underway based on international best-practice and:

- *Develop clarity around travel time and pricing; public-private partnership; rapidly changing technology, flexibility to service the airport's needs for the long-term; customer-centricity and opportunities to unlock broader benefits for Melbourne and regional Victoria*



### **Competitive internet**

Australia is 56<sup>th</sup> in global internet speed rankings. This is not good enough and without fixing will become a major issue for our economy and society. The next government should, as a matter of urgency:

- *Boost internet speed, coverage, capacity and security for Melbourne and Victoria.*



### **Digital capability**

Deep and rapid developments in digital technologies – particularly artificial intelligence – drive productivity, growth and investment, improve public services, and enable scientific breakthroughs on a scale never experienced before. This will also cause great disruption to employment markets and society. Melbourne and Victoria must be digitally capable to successfully navigate these significant challenges and opportunities. The next government should:

- *Raise the level of public debate to create a better understanding of how to prepare for the impact of AI on our economy, community and lives*
- *Highlight the contributions of AI to improve the performance of our transport infrastructure and travel experience*
- *Introduce an open and integrated architecture for all transport infrastructure to help the public make informed travel decisions*
- *Convene an inaugural Sport 4.0 forum in Melbourne to secure our billion-dollar sports industry's future in the digital age*



### **Innovative ecosystem**

Most globally relevant cities have a sizeable innovative (start-up) ecosystem. These places are attracting highly skilled workers and investors; generating the next wave of economic growth and attracting international capital. The next government should aggressively build on existing initiatives to nurture Melbourne's innovative capacity and ecosystem and:

- *Increase size and scale by attracting global accelerators such as the Palo Alto Research Center (PARC) to Melbourne*
- *Lead collaboration between universities, government and private sector to help startups scale into enterprise-sized organisations that generate the wealth, employment and taxation revenues Australia will need*



### **Eastern seaboard collaboration**

Across the globe, integrated sets of cooperative cities – known as 'megaregions' – are the central competitive units where economic activity and innovation thrive. Too often Australia's cities compete with one another, and often lack the scale to play on the global stage. This is a major challenge in the Asian century, with Australia located in the world's most competitive region. The next government should:

- *Work with key stakeholders in state and federal governments to develop a blueprint for an Australian East Coast Megaregion to boost our economic and innovation capacity, while at the same time taking the pressure off our capital cities by activating the regions between them*



### **Build the experience economy**

Melbourne is a global sporting capital, Australia's arts and culture capital, and a business convention capital. Melbourne must expand its drawing power as an arts and culture capital that can capitalise on the growing overseas markets and retain and attract local and international talent. The next government should:

- *Develop a master plan for the city, integrating convention, arts and sporting precincts, the Yarra, and activate the use of our major sporting assets in Melbourne Park for the entire year*
- *Extend the Free Tram Zone by just five stops to include iconic 'Brand Melbourne' sites: the Arts precinct, the Melbourne Convention & Exhibition Centre, the MCG, the Melbourne Museum, and Melbourne & Olympic Parks.*
- *Extend all Melbourne museum hours to 6 pm weekdays, and 9 pm Fridays*

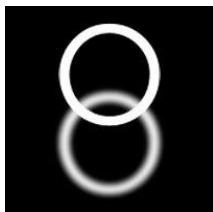


### **Greater Melbourne and Regional Victoria**

Melbourne is growing rapidly – adding one million in the last ten years, which is putting immense strain on Melbourne's transport system. The next government should:

- *Focus on cities and regions as part of one Masterplan for an integrated approach to population growth, transport and digital connectivity*
- *Host a state-wide conference to foster city and regional partnerships*

### **Who we are and what we do**



Committee for Melbourne's 150 engaged membership represents all sectors of the Greater Melbourne community in business, education and research, arts and culture and service delivery.

We cover the full spectrum of policy related to Greater Melbourne's Future Economy, Liveability, Urban Optimisation and Infrastructure.

For further information please contact Clive Dwyer: [cdwyer@melbourne.org.au](mailto:cdwyer@melbourne.org.au), 0410 220 521

To arrange a media interview please contact Sophie Bigaignon:

[sbigaignon@melbourne.org.au](mailto:sbigaignon@melbourne.org.au), 0432 858 796.