

Being born on city fringe must not disadvantage, says planning minister Richard Wynne

Clay Lucas

Published: August 6, 2015 - 12:15AM

Those growing up on Melbourne's fringes must not face lesser opportunities than those living in the city's inner and middle suburbs, Planning Minister Richard Wynne says.

New figures to be released by the Andrews government on Thursday show Victoria's massive growth over the next three decades will be largely driven by overseas migration totalling 2.7 million, and that Melbourne is hurtling towards a population of 8 million.

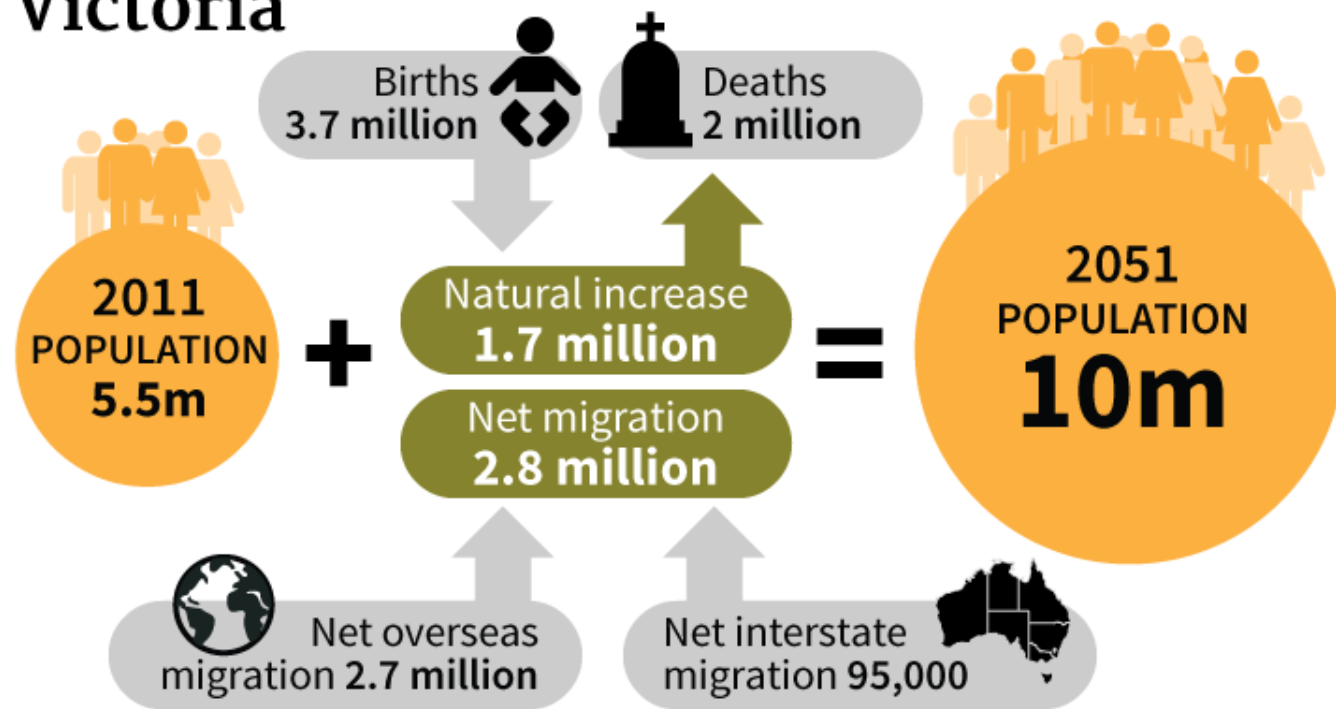
The projections are contained in the government's latest *Victoria in Future* report, to be released on Thursday. It shows Victoria will reach a population of 10 million by 2051.

The report projects that, whereas Victoria's regions will see their population jump to 2.2 million, most of the growth will fall on Melbourne – as it balloons from its current population of 4.4 million to 7.8 million.

Four of the five fastest-growing council areas are on Melbourne's fringes – Wyndham, Casey, Whittlesea and Melton councils will all see 145,000 or more new residents in their municipalities.

Wyndham in particular is experiencing a surge in births, with more than 70 a week as suburbs like Point Cook, Williams Landing, Tarneit and Wyndham Vale expand.

Components of population change Victoria



Source: State Government Victoria

But the rapid growth in suburbs with cheaper housing on the Melbourne's fringes has [fuelled fears](#) the city will be hit with increased social problems – as outer urban dwellers miss out on the opportunities of living closer to an increasing number

of jobs in the city centre.

Mr Wynne will tell a conference looking at how Melbourne will cope with such rapid growth that state governments have the "duty and an obligation" to ensure planning decisions mean outer Melbourne suburbs have proper access to transport and infrastructure.

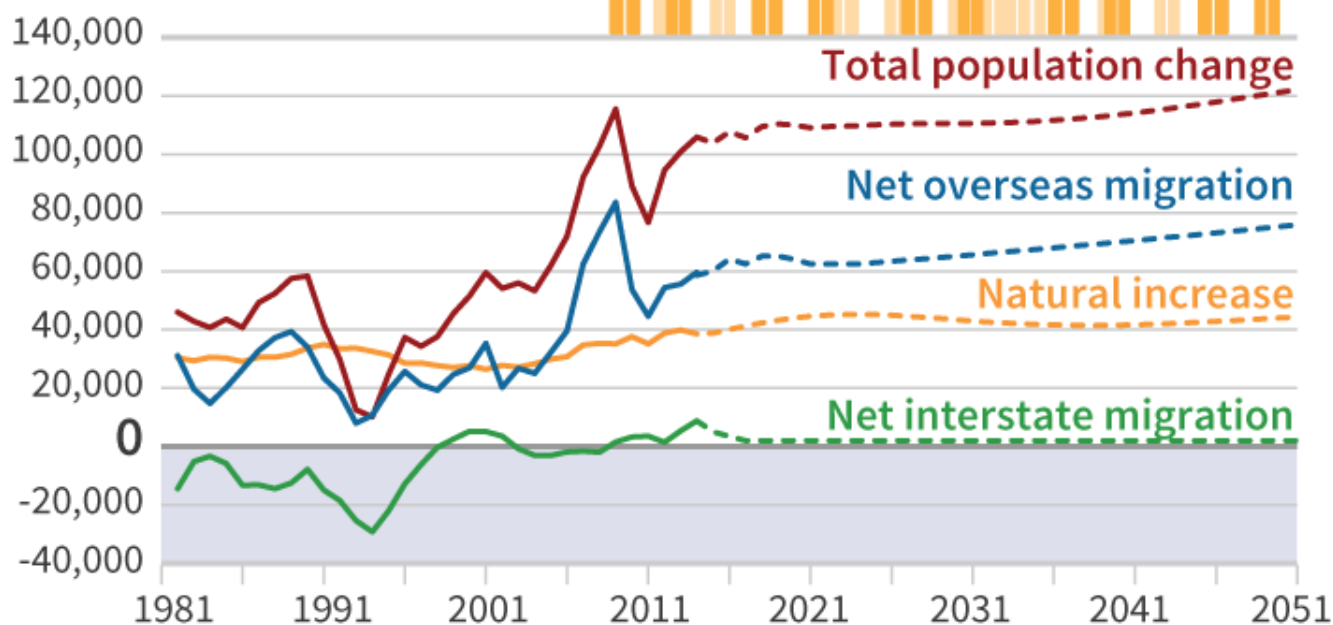
"Being born on the fringe of the city versus in the inner and middle suburbs [must] not have a long term negative impact on your life chances," Mr Wynne will say on Thursday.

"We cannot let Melbourne become a city where the rich live near transport and services and our key workers are stuck out on the fringe and facing long commutes."

Instead the city needed to build on its strength of fostering a multicultural and inclusive society.

Annual population change by component

Victoria



Source: State Government Victoria

The planning minister has warned that, unless Melbourne wanted to face growing inequality, more housing was needed closer to jobs and services, and transport infrastructure needed to be built connecting people to the key hubs.

Mr Wynne will open the two-day event, *How will we cope with 8 million people?*, being staged by Victoria University, *The Age* and the Committee for Melbourne. It will look at how Melbourne will cope with the challenges caused by a rapidly growing population as the city expands.

This story was found at: <http://www.theage.com.au/victoria/being-born-on-city-fringe-must-not-disadvantage-says-planning-minister-richard-wynne-20150805-gisakd.html>